

# SafelT E-mail Encryption

Version 2006, Professional Edition

Recent public exposure of FBI's "Carnivore" e-mail snooping program and the global digital surveillance system Echelon has highlighted what has been known for a long time- everything you transmit by e-mail can be intercepted and used by others. External industrial espionage, hacker attacks or internal information theft - all are urgent threats that you need to protect yourself against.

The award-winning SafelT E-mail Encryption 2006 is the leading program for user-friendly secure e-mail communication. The encryption technology used, supports several encryption algorithms, including the new AES-standard, and key lengths from 256-480 bits. Choose automatic encryption between SafelT users or to send secure e-mail to any receiver by using SafelT Express.

## Key Features

SafelT E-mail Encryption 2006 is easy to install and administrate. The program includes the following functionality:

- Automatic establishment of secure e-mail communication between SafelT users. Continue to use your normal e-mail client. All e-mails sent, including attached information, will be encrypted before leaving your computer. SafelT E-mail Encryption guarantees point-to-point secure communication. At no time in transit can your information be accessed or modified.
- SafelT Express, Easily send password encrypted secure e-mails to counterparts that are not using SafelT, including web-mail users.
- Efficient compression of all secure e-mails sent and received to increase transmission speed.

## Technical Specifications

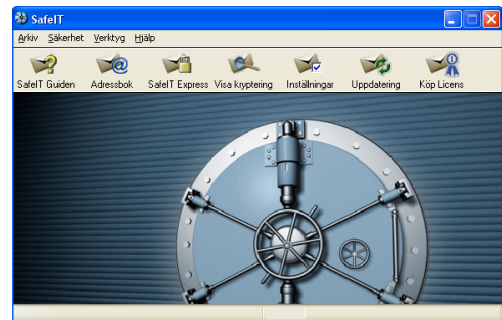
### System Requirements

- SafelT is optimized for all Windows platforms.
- An e-mail program and an e-mail address supporting the SMTP/POP3-protocols (e.g. Microsoft Outlook, Outlook Express, Netscape, Eudora, Opera).

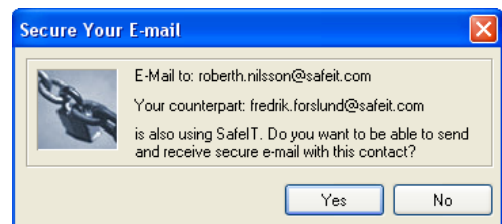
### Security Technology

- Symmetric encryption algorithms:
  - New AES-standard Rijndael (256 bits),
  - Blowfish (448 bits),
  - Twofish (256 bits),
  - SafelT-algorithm (480 bits).
- Asymmetric encryption algorithm:
  - Diffie-Hellman Key Exchange Protocol.
- Hash-algorithm: MD5
- PRNG: Isaac
- Automatic random key generation and constant exchange of encryption keys.
- Unique encryption keys used for each e-mail sent.

Sweden NT Awards  
NT 2001



▲ The main program from where you can access all functions in the program.



▲ The program automatically detects contacts that are using the SafelT program.



**SafelT Security** • Engelbrektsgatan 7 • SE-114 32 Stockholm • Sweden  
 Phone: +46 8 665 7958 • Technical Support: +46 8 665 7959 • Fax: +46 8 665 7965  
 Web site: <http://www.safelit.com> • E-mail: [info@safelit.com](mailto:info@safelit.com) • Support: [support@safelit.com](mailto:support@safelit.com)  
 © Copyright 1999-2006 SafelT Security Sweden AB, or its subsidiaries. All rights reserved.  
 ® Microsoft and Windows are registered trademarks of Microsoft Corporation.